



ab
architecture bulletin

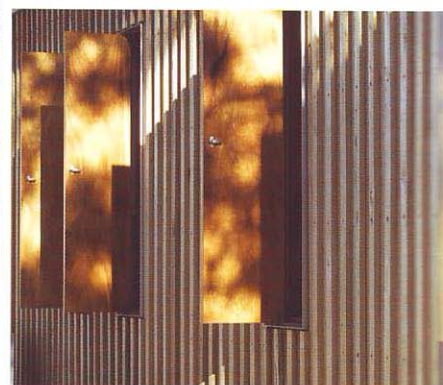
July/August 2008 \$11.00
AWARDS EDITION

Sulman Award

The Bowden Centre, Mt Annan Botanic Garden

Kennedy Associates Architects

public architect



The Bowden Centre is a new education building at Mt Annan Botanic Garden. It is a small building housing indoor and outdoor learning spaces and their supporting facilities and is the first permanent building for the garden.

The building is impressive on a number of levels: form, sustainability and siting. The strength of the building form within its opposing roofs belies the modesty of the budget, providing a strong presence while remaining welcoming. Its siting captures a natural amphitheatre for teaching, which assisted in meeting the essential indoor-outdoor relationship required of the brief.

The quality of the primary spaces is achieved with a minimal palette of simple materials, well resolved and detailed with care. The reuse of materials from the original portable classroom was both sustainable and inventive and the environmental agenda is at the leading edge for passive systems and water capture and reuse.

This is a simple, elegant and intelligent building that demonstrates the important role architects can play in solving basic problems and elevating the response so that it is not only functional and sustainable, but delightful. It sits so calmly in its setting that it has a sense of inevitability.

All photos: Bart Maiorana



ire

Opening its doors to the public for the first time in more than a century, CarriageWorks offers an exciting addition to the cultural life of Sydney and its artists. It provides an environment of unique creativity and innovation; a new home for physical theatre, spoken word, music, dance, visual and hybrid arts.

The site is close to the city but difficult to access and being below road level not easy to identify. This has been resolved by the simple gesture of creating a small plaza at street level and celebrating it with a new public marker made of recycled trusses from the building.

The project is essentially an exercise in adaptive reuse: the design reveals and celebrates the industrial heritage of the site. The strength of the design comes from the directness of its response to the old buildings, respecting their structural grid as an ordering device and inserting simple strong new forms as a counterpoint to the intricacies of the old. The foyer delivers a remarkable new public space, animated and activated by the revealed heritage items.

Located in the Redfern–Waterloo precinct, CarriageWorks sets a precedent for the remaining development of the site, for heritage values to be respected and to inform the design of new interventions.



Photo: Prue Upston

Architecture Award CarriageWorks at Eveleigh Tonkin Zulaikha Greer



Photo: Michael Nicholson

The Ian Thorpe Aquatic Centre was the end result of two city design competitions. It sits on a prominent corner site in Ultimo and sets its curving roof trusses in dialogue with the white-framed structures of Darling Harbour. Internally it is one of the great public rooms of Sydney. Grand in scale, the curved roof sweeps over the entire internal space in one giant undulating wave. The simplicity of this gesture belies the drama of the architecture at once calm and compelling.

By removing the muscular structure to the outside of the building the inside remains clean and simple. The material palette is restrained, but carefully detailed. The building opens up to the city with a generous deck to the east and large openings to the busy street to the west allow direct visual connection between the stepped seating around the pool and the footpath beyond. The windows are framed by beautiful sculptural concrete pilots that hold the roof trusses.

As one of Seidler's last works, this public building is a fitting memorial.

Photo: Eric Sierins



Architecture Award Ian Thorpe Aquatic Centre Harry Seidler & Associates



Photo: Dirk Meinecke

Milo Dunphy Award
Stockland Head Office, Sydney
Bligh Voller Nield

sustainable award

While recognising that it is the RIAA's goal to have sustainability embedded within the criteria for all awards, no longer necessitating the consideration of sustainability for an individual award, this aim remains to be achieved. The jury believes outstanding projects that clearly and innovatively improve sustainable practice in architecture require recognition for their role in leading the way. Of course, a future when all buildings designed and built will inherently demonstrate a high degree of measurable environmental performance and consider all aspects of sustainability in a rigorous and comprehensive manner is the final objective. However, until this is a reality, this new named award, the Milo Dunphy Award, provides additional impetus for the holistic inclusion of environmental considerations and outcomes in architecture. It is named after Milo Kanagara Dunphy, a tireless activist who succeeded in saving vast areas of NSW.



Photo: John Gallings

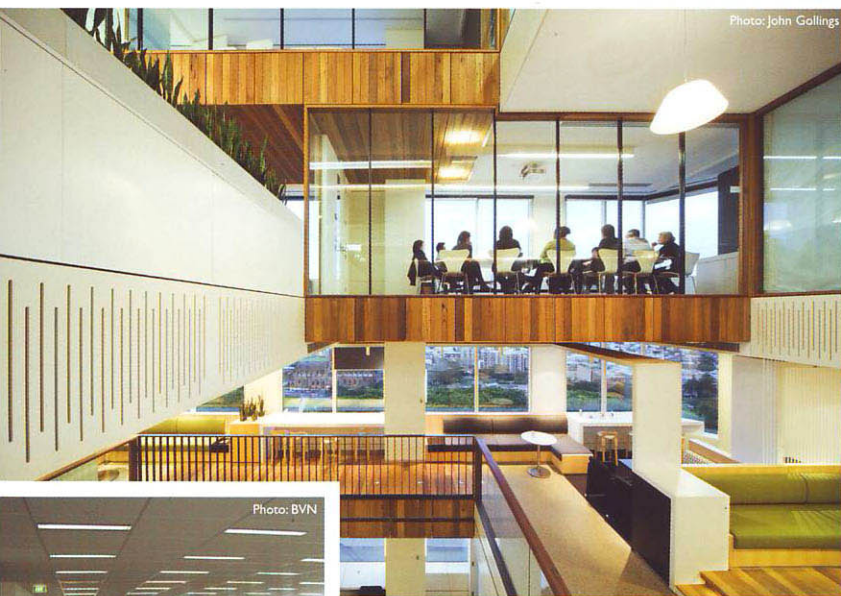


Photo: John Gallings



Photo: BVN

One of the great challenges for a sustainable future is to find solutions for the sustainable use of existing building stock and accordingly the existing infrastructure. Stockland Head Office addresses this challenge through the innovative refurbishment of eight floors of existing building to provide a lively workspace environment that supports human wellness and activity while reducing the office's environmental footprint. Key to this outcome is the eight-storey atrium that provides connectivity to all levels in a dynamic play of projecting floor planes; maximises daylight penetration; and improves access to internal and external views. Open plan office areas and support meeting rooms radiating away from the atrium and central core further support these strategies.

Wellness too is key, with the selection of low VoC emissivity products not only for finishes and sealants, but also for office furniture. Quality of the indoor environment is enhanced by the efficient provision of increased fresh air throughout the tenancy spaces. These initiatives are supported by strategies for minimised energy demand both in systems and fit out. While innovation is pivotal to advance sustainable outcomes it is also crucial that design intent be measured against deliverables, as is in process with this project. Such due diligence is key to the advancement of environmentally sustainable solutions in the future.



Leura House
James Stockwell Architect



Macquarie University Commerce Building E4A/E4B
DEM

entries

Architecture Award The Bowden Centre, Mt Annan Botanic Garden Kennedy Associates Architects

The Bowden Centre provides an alternative approach to the sustainable utilisation of existing building stock through innovative re-use of an existing demountable structure as the basis for a multi-function permanent facility. Its simplicity of form enables the centre to have a 'loose fit' that accommodates a wide range of activities from its primary use as a teaching facility to a seminar area or a function centre. Utilisation of the outdoor spaces is similarly successful with the outdoor room and verandah enabling great opportunity for response to varied conditions and uses.

In terms of re-use, the new building has been carefully sited where the earlier demountable structure stood and the steel structure and aluminium windows have been reclaimed for use. These initiatives along with the considered use of low maintenance materials and the inclusion of thermally efficient plywood clad openings rather than windows, enable the building to relate well to both ecosystem and climate.

Additionally the building adopts a unique thermal management system via a ground-coupled, solar energy based, hydronic temperature management system to address the conflict between teaching space brief requirements and traditional passive design. The seamless way in which sustainable strategies are holistically integrated into the design provides inspiration for a sustainable future.



Photo: Bart Maiorana



Photo: Bart Maiorana

shortlist



Illawarra Residence
Caroline Pidcock Architects



American Express Tower
Cox Richardson Architects & Crone Partners Architecture Studios



Cardita Apartments
Eeles Trelease Architects



Burns/Soghomonian House
Misho + Associates



treehouse
architecture saville isaacs pty ltd